



Ashley Junior School

# ASHLEY JUNIOR SCHOOL INFORMATION

In this booklet you will find useful information for new parents/carers and children starting at Ashley Junior School, New Milton, Hampshire.

2025 - 2026



## Contents

- Welcome
- Vision and Values
- Who's Who
- Year groups and classes
- The School Day
- Safeguarding
- Our Curriculum
  - Sex and Relationship Education
  - Religious Education
  - Sport at AJS
  - Music and performance at AJS
  - Enrichment, trips and visits
  - Homework
  - Special Educational Needs
- The Resourced Provision (Earhart class)
- Our Library
- Attendance
- Uniform
- House Teams
- School Lunches
- AJS After School Clubs
- Breakfast Club and After-school Club Wrap Around Care
- Medication and what to do if your child is ill
- Supporting children with long-term medical needs
- Parent-Teacher Association (PTA)
- Parent Partnership and Community Links
- Pupil Premium
- How to contact us / stay in touch



## Welcome!

We are *delighted* that you have chosen Ashley Junior School for your child. We are confident that your child will be very happy here. We are very proud of our school and believe we offer a rich and high quality learning experience.

We are rated 'Good' by Ofsted:

*'Pupils are well motivated by the school's high expectations and regular celebration of achievement. Pupils understand that trying hard and working together are important ingredients for learning. They excitedly look forward to the weekly celebration assemblies where individuals are recognised for their efforts and successes. They actively seek to earn points for their 'houses', which is a hotly contested competition.'*

In this booklet you should find all the information you need to know about starting life at Ashley Junior School. There is also information on our school website – <http://ashleyjuniorschool.co.uk/>

If you have any further questions, please don't hesitate to get in touch.

Call: 01425 616510

Email: [adminoffice@ajs.hants.sch.uk](mailto:adminoffice@ajs.hants.sch.uk)

May I take this opportunity to say that we are very much looking forward to working with you to provide the best learning experience for your child.

Best wishes,

*CBartolomeo*

Mrs. Charlie Bartolomeo  
Headteacher

## Our Vision and Values

***At AJS we foster a culture that encourages and celebrates effort and achievement, supporting individuals to become independent and reflective thinkers. As part of a wider community, children and adults take pride, enjoy lifelong learning and are secure in an environment of mutual respect and fun.***

We have expressed the values that underpin all we do and that we think are of primary importance in just three words:

**'Ready, Respectful and Responsible.'**

We believe that children need to feel comfortable and confident if they are to learn all they can. We work hard to develop good, positive relationships between children and staff.

*'Pupils behave with courtesy and consideration across the school. In lessons, pupils are focused on learning and follow teachers' clear routines.'* (Ofsted December 2023)

We have a number of rewards and systems that encourage positive behaviour and the children understand our rules:

**Ready – on time, equipped and eager to learn**

**Respectful – in all our actions and interaction with each other**

**Responsible – working together and keeping each other safe**



Ashley Junior School

## Who's Who 2025 - 2026

<b>Teaching Staff</b>	
Miss R Bower	Class Teacher
Miss L Brooker	Class Teacher
Mrs J Bunnett	Class Teacher
Mrs C Deverill	Class Teacher
Mrs N Harling	Class Teacher / SENDCo
Mrs A Harvey	Class Teacher
Mrs A Hebbert	Class Teacher
Mr D McCormack	Class Teacher
Mrs K Morgan	Class Teacher
Mrs C Pepin	Class Teacher / Deputy Headteacher
Miss K Stern	Class Teacher
Mrs E Wakelin	Class Teacher
Mrs L Witney	Class Teacher
<b>Learning Support Staff</b>	
Mrs S Andress	LSA
Mrs T Armstrong	LSA
Miss H Bardell	Lunchtime supervisor
Mrs L Bowdidge	LSA/ELSA
Mrs S Cheesman	Home School Liaison Officer/Mental Health Lead/Attendance Lead/Deputy Designated Safeguarding Lead
Mrs A Collins	LSA
Mr P Cousins	ICT Systems Manager
Mrs S Crump	LSA
Mrs C Dawson	LSA/ELSA
Miss K Fidler	LSA
Mrs M Haines	LSA
Mrs E Hayward	LSA
Mrs S Hurley	Assistant SENDCo / Leader of intervention
Mrs S Lansbury	LSA
Mrs J McCartney	LSA
Mrs C McCourt	LSA
Mr C Millward	LSA
Mrs J Murphy	LSA
Mrs R Nettleship	LSA/ELSA
Mrs H Pollard	LSA
Mrs V Ross	LSA
Mrs N Turner	LSA / Nurture
Mrs K Ward (Maternity Leave)	
<b>Administration</b>	
Mrs L Locke	School Business Manager
Mrs D Miller	MIS Officer
Mrs C Moore	Administrative Officer



**Mrs Bartolomeo**  
Headteacher  
&  
Designated  
Safeguarding  
Lead



**Mrs Pounds**  
Deputy  
Headteacher  
Monday –  
Wednesday



**Mrs Pepin**  
Deputy  
Headteacher  
Thursday -Friday



Ashley Junior School

### Site Management and Cleaning

Ms C Hayter	Cleaner
Mr M Hendy	Caretaker
Mr K Locke	Site Manager
Mrs K Lee	Cleaner

## Year Groups and Classes

Our classes at AJ S are all named after inspirational people, as we all aspire to be role models. The classes are as follows:

### Year 3



Rosen



Benjamin

### Year 5



Zephaniah

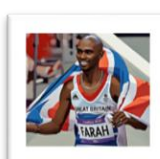


Simmonds



Earhart

### Year 4

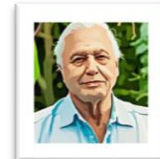


Farah

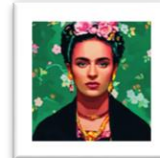


Curie

### Year 6



Attenborough



Khalo

### Resourced Provision:

Earhart class is the only class where children are taught as mixed year groups, with children from Years 3 to 6.

We try hard to ensure that class sizes do not exceed 30, though at times this is unavoidable. Some children are taught for some lessons in mixed age groups for specific learning programmes.

Our highly qualified and dedicated Learning Support Assistants (LSAs) are distributed through the school according to need. They lead a range of intervention programmes to support children. This can be in English, Maths or emotional support through our Emotional Literacy Programme (ELSA).

## Our School Day

9:00am	<b>Registration</b>	The school gates open at 8:45am and the bell goes at 8:55am each day and children need to be in school by this time. At 9:00am each day all entrance doors, other than the main door near the office, are secured with keypad locks. It is important that every effort is made to ensure that all children have arrived at school before the security locks are activated.
9:00am – 9:40am	Lesson 1	
9:40am – 10:30am	Lesson 2	
10:15am – 10:30am	Lower school break	You are welcome to send your child to school with a fresh or dried fruit snack for morning break. Please note only fruit snacks are acceptable. <i>You can also sign your child up to receive school milk at break time (see Cool Milk details enclosed)</i>
10:15am-10:30am	Upper school break	
10:45am / 11:00am – 12:15pm	Lesson 3	
12:15pm – 1:15pm	Lunch	Years 3 and 5 have lunch 1 <sup>st</sup> sitting. Years 4 and 6 have lunch from 12:40pm.
1:15pm – 2:55pm	Lesson 4	Once a week each year group will have Music and Computing teaching in this time slot.
2:55pm – 3:25pm	Assembly	Each day there is an act of Collective Worship as a whole school or in class. Friday is Celebration Assembly, where we celebrate the achievements of the week.
3:25pm – 3:30pm		At the end of the day, parents are welcome to wait for children in the playground but are asked to closely monitor younger siblings. Please note scooters and bikes must not be ridden in the playground.



Ashley Junior School

## Safeguarding

The security and safety of your child whilst attending AJS is of paramount importance.

If you need to collect your child during the school day you will need to sign them out from the School Office. In the same way, if you are visiting the school during the day you need to sign in at the School Office and wear a visitor badge at all times.

Parents must ensure that we have **up to date contact numbers**. In the event of your child being unwell in school or having an accident we will use these numbers to contact you. If it is not possible to contact you the school will act 'in loco parentis' and make a decision about what action should be taken.

If you have any concerns regarding child safeguarding our Designated Safeguarding Lead is Mrs Bartolomeo.

*'Pupils appreciate the close, caring school community where everyone is welcome and new arrivals quickly make friends. Pupils happily chat with staff and feel they know them well. They value the way that staff will always listen and quickly act to support them when needed. This means pupils feel confident about reporting any worries they have. The helpful nature of the school community is captured by a parent saying: 'It's a very nurturing, supportive school.'  
(Ofsted December 2023)*



Ashley Junior School

## Our Curriculum

We work hard to create a curriculum and learning experiences that engage children and are relevant and fun. Research has shown that all learners learn best when they can link their learning – find connections between what they are learning. To this end we have themes, or topics, that are the ‘hooks’ from which all learning hangs. We have created a curriculum that is both knowledge and skills based, with opportunities to apply both.

Our programmes of learning have been planned around the National Curriculum and Programmes of Study. We take into account the advice offered by the Department for Education (DfE) when designing our curriculum.

Parents receive a termly letter that outlines the learning for their child over that term. Our website <https://www.ashleyjuniorschool.co.uk/> hosts further information about children’s learning.

### **Sex and Relationships Education:**

SRE is delivered through the school as part of Personal, Social, Health and Economic education (PSHE). The content can be seen in the SRE policy which is available on the website and covers growth, change and friendships amongst other things.

In accordance with legal requirements, the governing body reviews the methods and materials used within the school for the teaching of Sex and Relationships Education (SRE) on an annual basis.

### **Religious Education:**

We follow the Hampshire Agreed Syllabus, ‘Living Differences’ for Religious Education in the school. This reflects the fact that the religious traditions of the United Kingdom are in the main Christian, but also takes account of the other principal religions represented in the world.

We hold an Act of Collective Worship on a daily basis. This might be within the class, year group or whole school.

Parents have the right to withdraw their children from part or the whole of the religious education programme, though the school would have difficulty supporting this. Parents wishing to withdraw



Ashley Junior School

their children are asked to discuss their proposals with the Headteacher.

### **Sport:**

Pupils in all year groups experience PE lessons each week.

The sporting facilities available at Ashley Junior School, coupled with the enthusiasm of the staff, mean that we are able to offer a wide range of sporting activities to our children. Children have at least 2 hours of active learning a week.

We are extremely fortunate to have a well-equipped gymnasium as well as a large hall. The school field is huge and accommodates training grids, football pitches and a large rugby pitch.

We participate in a wide range of sporting competitions as part of our involvement in the local Sports Partnership.

Children can work towards our sports awards – 'Fit for Learning' – which leads to becoming a Sports Ambassador for the school. We want as many children as possible participating in the many opportunities offered and leading active lives.

### **Music and performance:**

Music is rich, varied and very much alive at Ashley Junior School.

We also offer music tuition, through Shining Lights Performing Arts teachers. This is taught by expert music teachers who visit the school each week to take lessons. When your child starts here at AJS you will receive a letter detailing the instrument lessons that are available through Shining Lights.

We put on a large-scale drama production in Year 6. give our children a chance to shine, as well as Harvest and Easter assemblies.

### **Curriculum enrichment – trips and visits:**

We believe that getting out of the classroom to enrich learning is a valuable part of school life. Alongside using our extensive grounds, trips and visits happen in every year group. In the past we have run trips to Fishbourne Roman Palace, the Jewish Synagogue in Bournemouth, Southampton Art Gallery, the Ancient Technology Centre, the Winchester Science Centre and the Living Rainforest....to name but a few.



Ashley Junior School

There are also many events that we hold here in school, including pottery workshops, theatre events and wildlife talks.

In Year 5 children have the chance to spend time away from home at an outdoor activity centre; this year it was to the PGL site in Osmington Bay in Dorset.

The school can only keep running this rich variety of experiences if we receive enough money from parents and carers to cover the costs involved. Although payment is not a requirement (except in the case of the residential and theatre experiences) without your voluntary contributions, the school is unable to financially support these trips.

### **Homework:**

We expect children to complete at least 30 minutes homework each evening. Homework will be set in the following each week:

### **Mathematics:**

- Your child will be asked to practise times tables facts using the Times Table Rock Stars online programme. They can compete against friends and other class members and will be set challenges regularly. To secure these key number facts they should practise regularly, several times a week.

### **English:**

#### **Spelling**

- Your child will be asked to practise their spellings weekly online. Programmes/activities build your child's spelling confidence and ability as it is tailored to their individual strengths and weaknesses.

#### **Reading**

- There is an expectation that your child reads every night, either independently, or with an adult or older sibling. They then need to complete their 'Reading River Record' to document this reading. There are a variety of different ways your child can record their reflections.

*'The school has an ambitious and broad curriculum which meets the national curriculum requirements. There has been considerable curriculum development so that it provides carefully constructed 'learning journeys'. Detailed plans identify and arrange the important knowledge and skills that pupils need to learn. A robust response to the low outcomes of 2023 means the curriculum directly addresses areas of lower performance.'*



Ashley Junior School

*Current pupils achieve well through the planned curriculum because of decisive improvements to the curriculum, teaching and assessment'. (Ofsted December 2023)*

### **Extended learning:**

Your child will occasionally be given an extended piece of learning to produce a quality piece of work around their topic. This deepens understanding and enables children to be creative with their presentations.

### **Celebrations:**

We love to hear about children's achievements outside of school and like to celebrate these in our weekly Celebration assembly. If your child has passed an exam, raised some money, won an award or done something wonderful outside of school please do let us know!

### **Special Educational Needs:**

All children have special needs, but to be on the Special Educational Needs (SEN) register in schools they must meet certain criteria.

Children may be identified as having special educational needs according to county criteria. SEN falls into four broad categories:

- Cognition and learning
- Communication and interaction
- Social, Emotional & Mental Health
- Sensory/Physical

Children may be supported through 'additional SEN support', or at a higher level through an Education, Health and Social Care Plan. Personalised Learning Plans (PLPs) will be in place to support pupils with SEN.

Further information may be found on the school website, or by contacting our school SENDCo Mrs Harling.



Ashley Junior School

## Resourced Provision (Earhart class)

The Resourced Provision (RP) is funded by the Local Authority. It is an integral part of our school and caters for children within the 7 – 11 age range who have been formally assessed as having moderate learning difficulties and have been given an Education, Health and Social Care Plan of special educational need.

The RP provides a smaller setting for these children within our mainstream school. We stress the importance of integration with the rest of the school and we have a number of children within the RP who are in mainstream classes for specific subjects, as well as some children from mainstream receiving support within the RP if required.

Places in the Resourced Provision are allocated by Hampshire County Council.

## Our Library

We are very lucky to have a large library here at AJS. Children in all year groups visit the library each week and they are allowed to take out two books at a time. These books can be taken home, but they must be returned to the library. Hampshire Library Service visits us twice a year to refresh the books.

The library is also used as a learning space for small group work.

## Attendance

Research has consistently shown that children who have regular absence do not do as well as they should at school. By attending regularly you are giving your child every opportunity to:

- form good relationships, make friends and have fun
- develop good habits that will be appropriate through life
- increase confidence, self-esteem and social skills
- have better career prospects
- achieve their potential

We believe that every lesson counts and that it is important that children make a determined effort to be in school.



Ashley Junior School

If your child is absent from school, please notify us of the reason either in writing via email to [adminoffice@ajs.hants.sch.uk](mailto:adminoffice@ajs.hants.sch.uk) or by telephoning the School Office, before 8:30am. The absence line is available on the main school number – 01425 616510.

Registers are taken at 9:00am and again at 1:15pm. If your child is late you must bring them to the School Office. Arriving late often leaves children feeling flustered and uncomfortable, is not a good start to the day and is developing habits that will be detrimental to their life chances later on.

Term time leave of absence will only be allowed in exceptional circumstances and all term time holiday requests must be submitted on a leave request form to the Headteacher for approval. A letter or note to the teacher is not enough. These forms are available on the school website or from the school office.

We are part of the Arnewood Pyramid of schools and we operate their attendance policy. In line with Hampshire County Council guidance this policy includes the requirement to issue penalty notices for unapproved term time absence of more than 5 days, or of 10 sessions within any 100 school sessions, when a pupil has poor attendance. Please refer to the attendance policy for details.

### **Car park:**

Please note that the AJS car park is for staff, school transport (buses and taxis) and disabled badge holders only. All other parents/carers must park in Norman's Way or in the Rugby Club Car Park opposite. Thank you for your support with this; it is essential to keep all our children safe.



Ashley Junior School

## Uniform

We believe that children should look smart, take a pride in their appearance and feel comfortable in what they wear to school every day. We have an agreed dress code that has its basis in common sense, practicality and safety. Our uniform also enables children to engage comfortably in physical play at break and lunchtimes. If you wish to make an adjustment to the school uniform because of religious or other reasons, please discuss this with the Headteacher first.

- School sweatshirt/cardigan with the school logo
- White shirt/polo shirt- non branded
- Black school shoes or black trainer-style shoes
- Grey trousers/shorts/skirt- non branded
- School socks- grey, white, black or blue
- Gingham light blue dress/playsuit – optional for the summer months
- Tights- grey, blue or black in the winter months
- Optional - blue zip-up fleece, with the school logo
- Optional - blue showerproof jacket, with the school logo

The theme throughout the dress and appearance code is based on appropriateness for school and learning. We recognise that different people have different views of what is 'appropriate' and would ask you to bear the following in mind:

### Hairstyles:

Pupils should avoid extremes of hairstyles.

- Children are expected to retain their natural hair colour. Hair extensions are not permitted.
- Hair accessories should be simple and minimal.
- Long hair must be tied back – especially for PE and Games

### Jewellery:

Earrings can be worn. However, we ask that they are:

- Small plain gold or silver studs only, in the lobe. Earrings will need to be removed for PE; if the child cannot remove the earrings themselves, then parents/carers must provide tape for the child to cover the studs.



Ashley Junior School

- Wristwatches can be worn to school but children do so at their own risk. Please note, no SMART watches should be worn in school; any brought in should be handed to the class teacher for safe-keeping during the school day

### **Footwear:**

- Black school shoes OR black trainer-style shoes can be worn on non-PE days. Please note that trainers must be worn for PE or games
- For health and safety reasons, high-heeled shoes are not permitted
- Open-toed sandals may only be worn in the summer months with socks
- Children are not allowed to wear boots. If the weather is very bad they can wear boots to school, but they must change into school shoes once inside

### **House Teams**

Every pupil in Ashley Juniors is assigned a house team when they start. This will be their team throughout their time at the school. The teams are:

- Blue house
- Green house
- Red house
- Yellow house

If your child already has a sibling at the school, they will be in the same house team. Your child will need to have a PE shirt that is the colour of their house team. These PE shirts are available from the uniform shop in New Milton (PMG Schoolwear - <https://www.pmg-schoolwear.co.uk/> ).

House teams compete against each other at sports events and for the Housepoint Cup.

### **PE Kit:**

PE kit is part of the school uniform. We have high expectations in sport and this includes kit and how children present themselves. PE kit for both boys and girls is:



Ashley Junior School

- Black PE shorts- non branded
- T-Shirt in house colours, with the school logo
- Trainers / plimsolls
- Optional: Blue hooded sweatshirt, with school logo

**PE kit to be worn into school on your child's assigned PE days.**

**PLEASE ENSURE THAT ALL SCHOOL UNIFORM, PE KITS, SPORTSWEAR ETC ARE PERMANENTLY NAMED.**

Uniform can be purchased from PMG schoolwear

<https://www.pmg-schoolwear.co.uk> In addition the school runs a preloved uniform shop with branded and non-branded goods at discounted prices. <https://app.uniformd.co.uk/items/ashley-junior-school>

#### **Mobile Phones/Electrical Devices/Smart Watches:**

Please could all parents/carers remind their children that mobile phones and smartwatches/devices cannot be used by the children whilst they are on school site. If parents/carers allow their child to bring such devices for the purpose of personal safety on the journey to and from school, these mobile phones and smartwatches should be turned off and handed in to the class teacher on the child's arrival into school. Pupils are not permitted to keep such devices on their person during the school day. The school accepts no responsibility / liability for loss or damage to these items.



## School Lunches

Hot school lunches are available every day here at Ashley Junior School. Lunches are currently provided by Hampshire's Education Catering.

There are always 3 options, one of which will be vegetarian. The children make their choice of lunch in the classroom each morning. If you know that your child will not be in until mid-morning (for a medical appointment for example) please do ensure you call the office to book your child a lunch. Bookings cannot be accepted after 10:45am.

If you would rather provide your child with a packed lunch each day that is fine. Children with packed lunches also eat in the dining hall. Please note that we are a nut free school, so do not include anything in your child's lunch box that includes nuts (e.g., Nutella).

All children are to bring a water bottle to school every day. Staying hydrated is essential for our students to perform their best throughout the day. (No Air up bottles)

Please ensure that the water bottle is clearly labelled with your child's name. This will help us keep track of belongings and ensure that everyone has access to their drinks

### **Paying for school lunches:**

Unlike at the infant school, lunch must be paid for here at the juniors. The cost of a hot, 2-course lunch is £3.20. Please ensure that you pay for lunches in advance.

The best way to pay for your child's school lunches is with our online payment system – Arbor.

### **Free School Meals:**

You may qualify for Free School Meals if you are in receipt of some benefits or tax credits.

You can very quickly check on the Hampshire website whether you are eligible. You will need your child's details, plus your date of birth and National Insurance Number. You can find out more about Free School Meals on the Hampshire County Council website: <https://www.gov.uk/apply-free-school-meals>



We would like to inform you that our catering provider will be changing from September 2025. We are excited to announce abm Catering will be our new provider. You can find more information by clicking the link <https://tinyurl.com/5n8ph42e>

## **School Milk**

Our school provides a milk scheme that is available to all of our pupils. Each child that registers with Cool Milk will receive a 189ml portion of semi-skimmed milk every day. To register and pay please go to [www.coolmilk.com](http://www.coolmilk.com)

Please note if your child is in receipt of FSM there is no charge but you are still required to register.

## **Breakfast Club and After-school Club Wrap Around Care**

We work in partnership with Premier Education to provide this service. Please refer to their website for further sign up information <https://www.premier-education.com/>

## **Medication and Illness**

If your child is not well enough to attend school you must let the school know by 8:30am, by leaving a voicemail message. Call the School Office on 01425 616510 and leave a message on our absence line or email the school at [adminoffice@ajs.hants.sch.uk](mailto:adminoffice@ajs.hants.sch.uk)

If your child is off school and we do not hear from you the absence will automatically be marked as unauthorised. This also becomes a safeguarding concern.

If your child has vomited or has had diarrhoea they cannot return to school until 48 hours after the last instance. This is to protect other children from infection.

We believe that every lesson counts and we therefore ask that all medical appointments, wherever possible, be made out of school hours. If you do need to take your child out of school for a medical appointment, we will need to see an appointment card / text / letter confirming the appointment time.



If your child is well enough to come back to school but is still taking medication the school can support you with this. Where a child has been prescribed antibiotics 3 times a day, we would ask that you give a dose before school, after school and at bedtime. If, however, they have to take more doses we can give medication in school if we have written permission to do so (permission forms are available from the School Office or on our website).

If your child is taken unwell whilst at school our first aiders will make an assessment of their condition. When your child starts at AJS we ask that you sign a permission form for giving them paracetamol, then if they simply have a headache etc. we can give them some medicine.

We will always phone you to talk to you before we do this. If we feel that your child really is too unwell to stay in school we will phone you and ask you to take them home.

Please note that we cannot give other medication in school unless we have written permission from the parent / guardian to do so; verbal permission is no longer enough.

Antibiotics and other medication that cannot be bought over the counter can only be given in school if it is prescribed by a doctor, in its original packaging with a pharmaceutical label. Please note the same applies to Ibuprofen; we cannot give any Ibuprofen pain relief to any child under 12 unless it is prescribed for that child by a doctor.

## **Supporting children with long-term medical needs**

When your child starts at AJS we ask you to complete a health needs questionnaire. If this alerts us to any special medical needs, we will contact you to assess how we move forward. If your child's needs are complex, we will invite you in to discuss their care in school and we will complete a healthcare plan with you.

If your child has complex health needs, please let us know as soon as possible as it may be that we need to arrange extra staff training.

Please note that if your child has an epinephrine Auto-injector or an asthma inhaler they will need to have two of these in school.



Ashley Junior School

One will be kept in the classroom and one will be kept in the School Office.

More information on how we support children with long-term medical conditions is available in our policy document. Please ask at the School Office.

## **AJS Parent-Teacher Association**

Every parent and member of staff at AJS is automatically a member of the Parent-Teacher Association. Every year the PTA raises money through events such as movie night, bingo night, ice cream sales, school disco. Money raised has gone towards purchases such as buying playground equipment, AJS Team sports jackets, 'Toots and Dudes' instruments, resources for our Nurture group, planting for the school grounds and Year 6 leavers gifts.

The more you are willing to be involved and help out the more the PTA can do. It is not just about raising money for the school – it is about coming together as a community.

You can find out more about the PTA through their Facebook page –

<https://www.facebook.com/ashleyjuniorpta/>

## **Parent Partnership and Community Links**

### **Working in partnership:**

It is essential that we work together to provide the very best for your children. Just like you, we want your child to achieve all they can. We will keep you as informed as possible with weekly newsletters and information that will help you support your child's learning and we hope that you will provide us with any helpful information and that you will support the work of the school.

We welcome parental involvement in a number of forms. We love it when you come into the classroom to listen to readers, or offer general support and we cannot run our extra-curricular events (such as trips and the annual Fun Run) without your help. If you are interested in regular volunteering please pick up a volunteer pack from the School Office.



## **Governing body:**

As a Foundation School, Ashley Junior School's governing body fulfils an important role. It is the owner of the property 'in trust' and is the employer of all the staff working at the school. The governing body consists of a variety of people from various professional backgrounds, many of whom are, or have been, parents of children attending the school. Any parent who would like to become involved in the work of the governors should, in the first instance, contact the Headteacher; we are always interested to hear from you.

## **Part of the community:**

We believe that we are an essential part of the Ashley Community and we make sure we are as involved as possible within it. We have strong partnerships with local groups including close links with Ashley Baptist Church. We are fully involved in events both within the Arnewood Pyramid of schools and the New Forest. We work particularly closely with Ashley Infant School to ensure there is continuity in children's learning.

## **Pupil Premium**

If your child is in receipt of Free School Meals, or has been in receipt of Free School Meals at any time in the last 6 years, the school receives extra funding – called Pupil Premium. This extra funding also applies to children who are in care, or have been adopted from care, and to children from armed services families. If you think that your child fulfils any of these criteria please do let the school know.

Pupil Premium is given to the school to help us support and raise the attainment of children from lower income families and vulnerable children. We believe our school caters above and beyond for these children; indeed the support is geared towards raising the attainment of all children, not just those receiving Free School Meals.

We achieve best value from this income, also providing additional support by putting in extra funds on top of this to ensure the provision is a success with a positive impact on



Ashley Junior School

learning. We have set out below how this income is spent and it's impact on raising standards.

We use Pupil Premium money to employ qualified, trained teachers and learning support assistants who lead interventions for vulnerable children, those from low income families, those receiving Free School Meals, or those who are underachieving in class. These interventions include:

- Lexia and ReadingPlus (online reading programmes)
- Paired Reading
- Phonics
- Junior Language Link to develop speaking and listening skills
- Social Emotional Development
- Nurture Group
- Precision Teaching Programmes
- First Class at Number maths intervention
- Greater number of small focused Learning Groups ensuring appropriately differentiated learning.
- Differentiated lunch break and playtimes
- 1:1 pupil mentoring by class teacher

Pupil Premium funding also contributes towards the employment of our Home Liaison Officer worker who meets with parents/carers if they, or we, have concerns about anything that may affect children's learning e.g.: attendance, medical issues and family difficulties.



Ashley Junior School

## How to contact us / stay in touch

If you need to contact the school you can either:

<b>Call us:</b>	01425 616510
<b>Email us:</b>	<a href="mailto:adminoffice@ajs.hants.sch.uk">adminoffice@ajs.hants.sch.uk</a>
<b>Come and see us:</b>	The School Office is open from 8:30am to 3:45pm every school day.

If you have an issue you would like to discuss, the first person you speak to should always be your child's class teacher. If you do not feel this is appropriate, or you do not feel your problem has been solved, please call us to arrange to speak to a member of the Senior Leadership Team.

If you would like some advice or support about issues at home that may be affecting your child, please do not hesitate to contact Mrs Stella Cheesman, who is our Home School Link Worker and Deputy Designated Safeguarding Lead who can be contacted through the School Office or via email [s.cheesman@ajs.hants.sch.uk](mailto:s.cheesman@ajs.hants.sch.uk)

### Keeping in touch:

The school produces a **newsletter** every Friday in term time. This contains lots of useful information, including useful dates, news, photographs of recent events and details of our weekly awards. This newsletter is available electronically only, via email, the school website and our app. Paper copies will still be available at the School Office upon request.

We update our **website** several times during the week and this has lots of information, including calendar dates and all letters home - <http://ashleyjuniorschool.co.uk/>

When we have news to share – for example there is a special assembly or a club needs to be cancelled, - we notify parents via text / email. Please make sure that we have up to date contact details for you.

### Marvellous Me

At Ashley Junior School we use Marvellous me a personalised communication tool that allows us to share real-time updates about your child. This one-way platform is designed to engage you by highlighting the wonderful milestones, progress, and happiness that your child experiences at our school.



Ashley Junior School



With this tool, you'll receive emotionally engaging news that reflects your child's learning journey.

### **AJS Social Media Platforms**

Check out our social media pages on Facebook and Instagram. Our **Insta** <https://tinyurl.com/7btz5dzs> and **FB** <https://tinyurl.com/mtjr9nij> posts are a great way to keep up with all the latest happenings, celebrate pupils' achievements, and stay informed about school events.

Engaging with us online will help you to feel a part of our school community and share in the joy of your child's journey. Don't miss out on the fun!

### **And finally.....**

We are exceptionally proud of our school and work hard to make it the best it can be. We are of course aware that we do not always get things absolutely right. If you have any concerns regarding any aspect of your child's education or things about the school, please let us know. We want to get it right.

Our staff are so hard working and genuinely care about what happens to the children at Ashley Junior School. You will find all of us approachable and willing to listen to any anxieties that you may have. *We are also willing to listen to any comments about when we get it right!*

We have a large but interesting challenge ahead of us. We know that the world is constantly changing and that change is happening increasingly rapidly. When your child is an adult the world will undoubtedly be a very different place; new technologies, jobs that don't even exist at the moment and an ever growing international dimension.

We want to equip your child with the skills and attitudes that will ensure they can make a positive contribution to society and enjoy all that life has to offer. The primary years are a vital stage in a child's development and we are very much aware of the importance of our role in it.

Working together we will give your children every opportunity of achieving great things.





Ashley Junior School

**Ashley Junior School**

**Normans Way**

**New Milton**

**Hampshire**

**BH25 5FN**

**01425 616510**

**[adminoffice@ajs.hants.sch.uk](mailto:adminoffice@ajs.hants.sch.uk)**