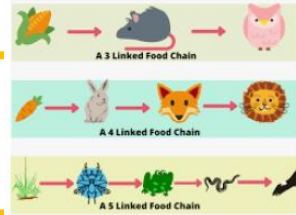


Science

The Science topic for this term is Living Things and Their Habitats. We will be studying how animals including humans interact with the world around them. With a focus on our local wildlife, we will find out how they have adapted to their changing environment.



RE

What does it mean to be a neighbour? We hope to find answers to that question in Christian stories. We will also discuss trees and their symbolism to people of faith.

Computing

We will be focusing on online safety to support us staying safe on line. Also, we will practise our coding using Lego.

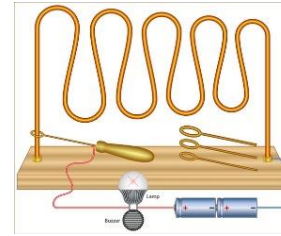


PSHE

How can our choices make a difference to others and the environment? Focusing on our shared responsibility to protect the world around us, we will consider the choices we make and how we can show care and concern for others and our environment.

DT and Art

We will be revisiting our knowledge about electricity and electrical circuits to create a Steady Hand Game in DT.



Maths

We will build on the mathematical knowledge we have already gained around number and calculations in topics including shape, fractions and measures. We will also be completing the National Multiplication Check in June.

12345
67890

PE

Following programmes from Get Set 4 PE, we will focus on athletics and football in the first half of the term and Outdoor Adventurous Activities and rounders in the second half.

French

Bonnes Vacances!
(Holidays and Hobbies)
We will learn the vocabulary for the months of the year and seasons. Also, we will practise how to describe our holidays and things we do in our spare time.



Championing Our Environment



Year 4 Summer Term 2026

Geography

With a local focus this term, we will be studying the counties around Hampshire before comparing New Forest towns and the forest itself to a European forest. This will include map skills, exploring local places during field trips and developing an understanding of land use.



English

Supporting our topic on the New Forest, we will be reading 'The Minpins' by Roald Dahl, which is set in a forest. We will look at persuasive writing opportunities linked to the book. Later in the term we will revisit some of our books to support the creation of our own stories to entertain young readers.