



# Ashley Junior School

Ready • Respectful • Responsible



READY  
RESPECTFUL  
RESPONSIBLE

Bulletin 12 - Friday 8th December 2023



## Letters home link

Do remember all letters home are available on our new Website:

## Whole School : Ofsted letter

<https://www.ashleyjunior.school.co.uk/page/?ti=Letters+Home&pid=71>

## We're using Arbor



### Who are Arbor?

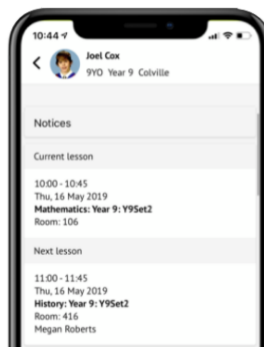
We've chosen Arbor as our MIS provider. An MIS is a system that helps schools collect, store, manage and use all the information they need. Arbor is a simple, smart and cloud-based MIS, meaning the data isn't physically stored in school, making Arbor super secure. It also means you can log into Arbor to see and update your child's information or make payments and bookings yourself!

Arbor was founded in 2011 by a small group of people on a mission to create a simple, smart MIS system that would help schools learn from their data to save teachers time and ultimately improve student outcomes.

### How can parents use Arbor?

Here's how you can use Arbor:

- Log into Parent Portal for Google Chrome on computers or laptops
- Download the Arbor App from the App Store or Google Play Store then log in on your phone (For Android 5.0 or iOS 10.0 and upwards)
- We can then send you In-app messages. We can also send you emails, letters or SMS!



**Have you logged on to the Parent Portal for Arbor yet?** Please check your emails from our school office team for details about your login.

It would be great to have even more parents signed up to the portal - check the app store today!



## ARRIVE ON TIME!

Our school gates are open between 8.45—8.55am, and then they close.

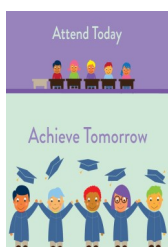
Look out for **TOKEN TIME** next week, and be **READY** to pick up your token!



## This week's AJS attendance :



91.6%



**Thank you** to our whole school community for their support this week during our Ofsted Inspection.

We were very proud of how hard the children demonstrated being **READY**, **RESPECTFUL** and **RESPONSIBLE**. They were all fantastic ambassadors for our school.

We will be able to share news of the outcome of the inspection some time after Christmas, when the report is finalised.



A group of avid AJS dancers represented the school this week at the New Forest Sports Partnership Dance Workshop; they were great representatives for the school. The children worked on many different ideas that can be



put into dances, from freeze frames to phases of movement. They had to create three freeze frames and learn some choreography. The Strictly Ballroom beckons for this group of AJS dancers - well done to them for all of their teamwork and creative efforts!



Thank you to everyone for coming to this term's Christmas Poetry and



Music Performances- we hope that it helped you to get into the Christmas spirit!

Very well done to all of our children for giving the audiences some very memorable moments on stage...HAPPY CHRISTMAS!





## Shadow Puppet Show

*Performed by Robin Class*

*Robin class have been learning about light and shadow and fairy tales. The pupils combined this learning to do a shadow puppet show for their parent /carers.*

*Thank you to all those who came to watch.*



## Arnewood Youth Theatre visit to AJS



The Arnewood Youth Theatre was created in September 2023.

A happy band of 25 students, from all year groups, created and devised a piece of theatre which they shared with our Year 6 pupils on Thursday morning.

Our children loved the reimagining of a traditional fairy tale and felt inspired by the creativity and passion!





**£20**  
PER CHILD  
PER DAY

## HOLIDAY CAMPS AT ASHLEY JUNIOR SCHOOL



**SCAN HERE  
TO BOOK NOW!**

or visit [premier-education.com/holiday-camps](http://premier-education.com/holiday-camps)

**Free places for  
Free School Meal children**  
contact us for details:

Stuart, 07855 861247 [skingsleysmith@premier-education.com](mailto:skingsleysmith@premier-education.com)  
Lewis, 07827 2344427, [ldibden@premier-education.com](mailto:ldibden@premier-education.com)



### Another week of fun and games at Little Prems!!

This week we have done lots of fun and exciting games at After School Club from Hot Chocolate with bananas to Wii Bowling!!

Below is a photo of one of our biggest supporters. Jack has been coming to Premier Education camps and clubs for many years and always has a smile on his face. His Play Doh modeling was a great success we wanted to share!

We are offering extended care after school finishes next Friday (15<sup>th</sup> December) with some Christmas themed activities for the afternoon. To book visit [www.premiereducation.com](http://www.premiereducation.com)  
If you would like any further information on any of our activities please contact us  
[skingsleysmith@premier-education.com](mailto:skingsleysmith@premier-education.com) Telephone 07855861247.



## STAR READER

Wren  
Arya  
  
Kestrel  
Isabella  
  
Kingfisher  
Luca  
  
Skylark  
Alexeena  
  
Barn Owl  
Alice  
  
Eagle  
Finley  
  
Hawk  
Eithan  
  
Osprey  
Abia  
  
Merlin  
Sienna  
  
Robin  
Autumn



## TIMES TABLES ROCK STARS

Wren  
Ellie  
  
Kestrel  
Nicholas  
  
Kingfisher  
Kaitlin  
  
Skylark  
Theadora  
  
Barn Owl  
Ruby  
  
Eagle  
Tannah-Mae  
  
Hawk  
Zachary  
  
Osprey  
Aliou  
  
Merlin  
Jeffin  
  
Robin  
-



## HIGH FLYER



Wren  
Johan  
  
Kestrel  
Tess  
  
Kingfisher  
Lumen  
  
Skylark  
Phoebe  
  
Barn Owl  
Lilly  
  
Eagle  
Sam  
  
Hawk  
Violet  
  
Osprey  
Daisy  
  
Merlin  
Lucas  
  
Robin  
Roman

## TOP DOODLERS

Wren  
Maths Lucy  
Spelling Robin  
Kestrel  
Maths Max  
Spelling Jesvin  
Kingfisher  
Maths Anya  
Spelling Milo  
Skylark  
Maths Alexeena  
Spelling Aoife  
Barn Owl  
Maths Archie  
Spelling Lilly  
Eagle  
Maths Luke  
Spelling Yasmine  
Hawk  
Maths Eithan  
Spelling Alex  
Osprey  
Maths Bonnie  
Spelling Aliou  
Merlin  
Maths Joey  
Spelling Thea  
Robin  
Maths Isabelle  
Spelling Ray-  
mond





Attendance Matters



**Families can take various steps to support pupils' attendance, so that every child is READY for school:**

- create opportunities, after school, for children to talk about their time at school
- staying up to date with all communications from school
- avoiding school absences where possible – for example, by arranging GP and dental appointments outside of school hours
- building consistent bedtime routines – sleeping well, for the right length of time, helps improve energy levels, mood and concentration
- establishing good morning routines at home to help children arrive at school on time, having had a good breakfast and ready to start the day

**Attendance Figures**



**Did you know? 90% attendance may seem like an acceptable level of attendance, but the reality is that 90% attendance means that your child will miss 19 days of the school year ...which is nearly 4 weeks!**

**97% and above** - Less than 6 days absence in a school year. Pupils with this attendance should achieve the best possible outcomes.

**96%** - 8 days absence in a school year. "Good attendance". Pupil with this attendance are more likely to achieve their targets.

**92%** - 15 days absence in a school year. Pupils with this attendance are missing 3 weeks of school per year; it will be difficult for them to achieve their best. AJS may ask for medical proof to authorise absences.

**90%** - 19 days absence over the school year. Pupils with this attendance are missing approximately a month (19 days) of school per year and may fall behind academically and socially. With this level of attendance, the Department for Education consider children to be a 'Persistent Absentee'. Parents will receive letters about attendance and be asked for a meeting to discuss attendance.

**85%** - 29 days of absence in a school year. These pupils are missing approximately 6 weeks of school a year. It will be very difficult for them to keep up and achieve their best and build relationships in school.

**80% - 75%** - Pupils with this attendance are missing a day for every week of school! It will be almost impossible to keep up with their work. Parents of pupils with this level of attendance will be made known to the Hampshire local authority Attendance Team and also may face legal action if there is no medical or other authorised reason for their child's absence.





## DATES FOR YOUR DIARY...

NEW EVENTS IN RED/CHARITY EVENTS IN PURPLE



### Last week of term...

12th December	Whole School visit to Ashley Baptist Church (children only)
13th December	Christmas lunch & Christmas Jumper day
13th December	PTA—Movie Night
15th December	Sing-a-long and Carols (children only)
15th December	School finishes 1:30pm



### 2024

**2nd January 2024**

8th February

### **SPRING TERM 2024 STARTS**

PTA Winter discos - save the date!  
£3 per ticket.

Y3&4- 4:45 - 5:45pm

Y5&6 - 6.00 - 7.00pm.

(Details to follow)