



# Ashley Junior School

Ready • Respectful • Responsible



Bulletin 11 - Friday 24th November 2023



## Letters home link

Do remember all letters home are available on our new Website:

**Year 4:**

Baptist church letter

**Year 5**

Eagle class letter

**Year 6**

Headlice letter

[https://](https://www.ashleyjunior)

[www.ashleyjunior](https://www.ashleyjunior)

[school.co.uk/](https://www.ashleyjunior)

[page/?](https://www.ashleyjunior)

[ti-](https://www.ashleyjunior)

[tle=Letters+Home](https://www.ashleyjunior)

[&pid=71](https://www.ashleyjunior)



## New Forest School Sports Year 5/6 Athletics Competition

We were very proud of the AJS athletes who were selected to represent the school at this year's New Forest School Sports Athletics Competition, held at New Milton Leisure Centre.

The team represented our school with pride, demonstrating our school values of being '**READY, RESPECTFUL** and **RESPONSIBLE**' brilliantly. Thank you for demonstrating such great sportsmanship throughout the event!



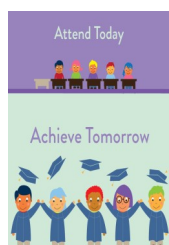
## ARRIVE ON TIME!

Our school gates are open between 8.45—8.55am, and then they close.

Look out for **TOKEN TIME** next week, and be **READY** to pick up your token!



This week's AJS  
attendance :



94.98%

THE ROYAL BRITISH LEGION  
**POPPY APPEAL**

The AJS community raised

**£288.57**

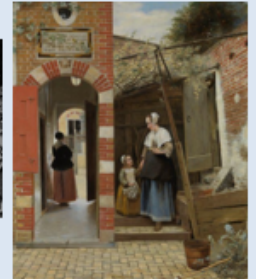
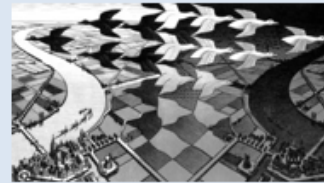
**THANK YOU...**

### ARTS&MATHS WEEK GALLERY

Wednesday 29<sup>th</sup> November 2023, 3.30-4.30pm

We would like to invite parents/carers to come to this year's AJS Arts&Maths Week Gallery. The children will have created pieces of artwork that have been inspired by patterns, geometry, tessellation and sequencing, as seen in renowned works of art.

Please join us in the classrooms around the school from 3.30-4.30pm on Wednesday 29<sup>th</sup> November – we are **really** looking forward to sharing the children's artwork with you!



READY  
RESPECTFUL  
RESPONSIBLE

### WEDNESDAY 13th DECEMBER

### AJS CHRISTMAS LUNCH

Please click the link

<https://forms.office.com/e/ukTUm5MGkE>



If you wish to order your child a Christmas hot school meal,  
the deadline for bookings  
is Tuesday 28th November.



### AJS Competition time

Who's ready to get creative at home and design another badge for all to see on MarvellousMe?

A **Highflyer** from each class is selected each week in our Celebration Assembly. Throughout the school week, teachers look out for children that are being Ready, Respectful and Responsible.

Can you design a MarvellousMe badge to represent our **Highflyer** of the week?

Click here for the design template—

<https://www.ashleyjuniorschool.co.uk/page/?title=Marvellous+Me&pid=76&action=saved>





# Diarrhoea and vomiting in children

Keep kids home from school for



after symptoms have passed.  
This is enough time to let the virus run its course

If your child already has a serious illness, or symptoms last longer than a few days, contact your GP to seek advice



You don't need to visit the GP for stomach bugs such as **Norovirus**. Symptoms usually clear up in a few days.



Visit [nhs.uk/norovirus](https://www.nhs.uk/norovirus) for advice on managing the spread of Norovirus



## Home Treatment



Paracetamol is useful for fever or aches and pains



Give kids plenty of water to stay hydrated and replace lost fluids



If your child feels like eating, give them bland foods



## PTA - Christmas Raffle Ticket Reminder



If you have not yet purchased raffle tickets, you can now buy them from the school office...

**Closing date:**  
**Friday 8th December**



## Hot School Meal Debts

Unfortunately, **WE CANNOT OFFER CREDIT**.  
Unpaid dinner debts *must* be cleared and accounts put back in credit in order to make future meal bookings...

**NO FUNDS = NO DINNERS**



## HAMPSHIRE & ISLE OF WIGHT CONSTABULARY

To help keep our children safe when they are out in our community,

please remember that you can report crimes to the police by calling 999, or by reporting it online:

[www.hampshire.police.uk/ro/report/ocr/af/how-to-report-a-crime/](https://www.hampshire.police.uk/ro/report/ocr/af/how-to-report-a-crime/)





## *Celebrating our school community!*

We were so pleased to see our children having lots of fun sketching outside with the Play Leaders at lunchtime this week.


Working **RESPECTFULLY** together to create this great piece of playground artwork, this is a wonderful celebration of what makes our AJS 'family' so special.

Thank you, children!





Reminder closing date Friday 8th December 2023



**Ashley Junior School**  
**Wednesday 13<sup>th</sup> December**  
**£5.00 per ticket**

**Ticket price includes a movie snack bag**  
**(Crisps, popcorn, bag of sweets and a Christmas gift)**  
**Children will need to bring their own drinks bottle.**

# **Christmas Movie Night**

**Year 3, 4, 5 & 6 Polar Express**

**3:30pm – 6:00pm**

**Closing date for ticket purchase is  
Friday 8<sup>th</sup> December. Payments to  
be given to the school office in  
named, sealed envelope with the  
correct payment enclosed.**

**No tickets can be purchased on the  
door.**

**Parentkind**  
Member Association



# Ashley Junior School



**School Caretaker**  
**25 hours per week**  
**Monday – Friday**  
**Permanent Term-Time Contract**  
**(including 2 weeks summer holiday cover)**

**Required from 2<sup>nd</sup> January 2024**

We require an enthusiastic Caretaker to join our friendly, supportive and innovative staff team, working with the Site Manager to provide caretaking, cleaning, portering, routine maintenance & landscaping. Situated on the edge of the New Forest, we are a good school with ambitious plans for the future. We have a history of developing and supporting staff and providing a warm, caring and fun learning environment. This role will involve contact with children and will amount to 'regulated activity'.

**If you:**

- are hard working
- enjoy working with others
- are resilient and enjoy a challenge
- enthusiastic about working outdoors

***...then we want you!***

Visits to our school are warmly welcomed and highly recommended. Please contact Mrs C. Moore, Administration Manager, [adminoffice@ajs.hants.sch.uk](mailto:adminoffice@ajs.hants.sch.uk) if you would like to arrange a visit or if you require further information.

Application forms and details available from the website:  
[www.ashleyjuniorschool.co.uk](http://www.ashleyjuniorschool.co.uk)

The completed application form, and the HCC Equality Monitoring Form, should be emailed to the school office:  
[adminoffice@ajs.hants.sch.uk](mailto:adminoffice@ajs.hants.sch.uk)

*Ashley Junior School is committed to safeguarding and promoting the welfare of children and young people, and expects all staff and volunteers to share this commitment. Enhanced DBS checks will be required prior to any offer of employment.*

**Closing date:** 9.00am, Monday 4<sup>th</sup> December 2023  
**Interviews:** Wednesday 6<sup>th</sup> December 2023



**Hampshire**  
County Council

## STAR READER

Wren  
Lucy

Kestrel  
Darcy

Kingfisher  
Elwood

Skylark  
Leonardo

Barn Owl  
Lucy

Eagle  
Zack

Hawk  
Scarlett

Osprey  
Daniel

Merlin  
Lois

Robin  
Alfie



## TIMES TABLES ROCK STARS

Wren  
Ellie

Kestrel  
-

Kingfisher  
Luca

Skylark  
Phoebe

Barn Owl  
Levi

Eagle  
Finley

Hawk  
Ethan

Osprey  
Emilia

Merlin  
Esme

Robin  
-



## HIGH FLYER



Wren  
Summer

Kestrel  
Oscar

Kingfisher  
Elsie

Skylark  
Amber

Barn Owl  
Erik

Eagle  
Poppy

Hawk  
Dolcie

Osprey  
Bonnie

Merlin  
Agnes

Robin  
Daniel

## TOP DOODLERS

Wren  
Maths Robin

Spelling Hunter

Kestrel  
Maths -

Spelling -

Kingfisher  
Maths Iris

Spelling Ethan

Skylark  
Maths Aoife

Spelling Molly

Barn Owl  
Maths Archie

Spelling Archie

Eagle  
Maths Yasmine

Spelling Jiyona

Hawk  
Maths Nicole

Spelling Cody

Osprey  
Maths Kajetan

Spelling Bonnie

Merlin  
Maths Jeffin

Spelling Lottie

Robin  
Maths Holly

Spelling Damon





Attendance Matters



**Families can take various steps to support pupils' attendance, so that every child is READY for school:**

- create opportunities, after school, for children to talk about their time at school
- staying up to date with all communications from school
- avoiding school absences where possible – for example, by arranging GP and dental appointments outside of school hours
- building consistent bedtime routines – sleeping well, for the right length of time, helps improve energy levels, mood and concentration
- establishing good morning routines at home to help children arrive at school on time, having had a good breakfast and ready to start the day

**Attendance Figures**



**Did you know? 90% attendance may seem like an acceptable level of attendance, but the reality is that 90% attendance means that your child will miss 19 days of the school year ...which is nearly 4 weeks!**

**97% and above** - Less than 6 days absence in a school year. Pupils with this attendance should achieve the best possible outcomes.

**96%** - 8 days absence in a school year. "Good attendance". Pupil with this attendance are more likely to achieve their targets.

**92%** - 15 days absence in a school year. Pupils with this attendance are missing 3 weeks of school per year; it will be difficult for them to achieve their best. AJS may ask for medical proof to authorise absences.

**90%** - 19 days absence over the school year. Pupils with this attendance are missing approximately a month (19 days) of school per year and may fall behind academically and socially. With this level of attendance, the Department for Education consider children to be a 'Persistent Absentee'. Parents will receive letters about attendance and be asked for a meeting to discuss attendance.

**85%** - 29 days of absence in a school year. These pupils are missing approximately 6 weeks of school a year. It will be very difficult for them to keep up and achieve their best and build relationships in school.

**80% - 75%** - Pupils with this attendance are missing a day for every week of school! It will be almost impossible to keep up with their work. Parents of pupils with this level of attendance will be made known to the Hampshire local authority Attendance Team and also may face legal action if there is no medical or other authorised reason for their child's absence.





## DATES FOR YOUR DIARY...

NEW EVENTS IN RED/CHARITY EVENTS IN PURPLE

29th November

AM: Year 3 Science event—Explorer Dome

AFTER SCHOOL 3.30—4.30pm **ART GALLERY**

- all families welcome to come into school to view the Maths/Arts week work in each classroom.

30th November

PM—Year 4 RE visit to Ashley Baptist Church( see separate letter)

1st December

**PTA Sparkle and Shine Day** - Children come to school in their own 'Sparkle and Shine' outfits, in exchange for donating a raffle prize for the PTA Xmas Raffle.

5th December

Poetry performance

Lower School 2-2.45pm

Year 3&4 parents invited (details to follow)

7th December

Poetry performance

Upper school 2—2.45pm

Year 5&6 parents invited( details to follow)

12th December

Whole School visit to Ashley Baptist Church (children only)

13th December

Christmas lunch & Christmas Jumper day

13th December

PTA—Movie Night

15th December

Sing-a-long and Carols (children only)

15th December

School finishes 1:30pm

## **2024**

**2nd January 2024**

**SPRING TERM 2024 STARTS**

**8th February**

**PTA Winter discos - save the date!**

**£3 per ticket.**

**Y3&4- 4:45 - 5:45pm**

**Y5&6 - 6.00 - 7.00pm.**

**(Details to follow)**